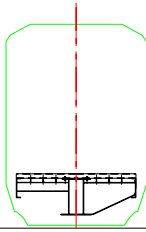


CAR NOS.		INSIDE LENGTH	66' 00"	MAX.HEIGHT:	14' 10-1/4"
TYPE:	Center Beam Flat	INSIDE WIDTH	9' 0-3/4"	MAX.WIDTH:	10' 0-3/4"
AAR CODE:	FBC F383	INSIDE HEIGHT	10' 10"	DECK HEIGHT ATR:	4' 0-1/4"
YEAR:	MAY-SEP/1980	TRUCKS		U. EAVES:	9' 9" @ 4' 0" ATR
BUILDER:	Marine Industries Ltd.	TRUCK TYPE:	Barber S-2	L.EAVES	
COUNTRY:	Canada	BOLSTERS		SUPERSTRUCTURE	
LOT NO.				ROOF:	N/A
LEASED FROM:		SIDE FRAMES:		ROOF HATCHES:	N/A
TERMINATION:				SIZE:	
CTR OF GRAVITY:		AXLES:	6-1/2 X 12	ENDS:	FABRICATED
LD LMT:	188,500 lbs	BEARINGS:	Roller Bearings	FLOOR:	Plate Steel
AVG LT WT:	74,500 lbs	WHEELS:	36" 1-W	FLOOR CAPY:	
CUBIC CAPY:		SIDE BRGS:		SIDES:	
CLEARANCE:		R.BRG.ADAPTERS:	Narrow Pedestal	DOORS:	
BRAKE SYSTEM		SNUBBER:		DOORS:	
AIR BRAKE:	ABD / ABDW	OUTER CTRL SPRG:		GASKET:	
BK RIGGING:	Wabcopac	INNER CTRL SPRG:		DOOR WIDTH:	
LEVERS:		BK BEAM WEAR PLT:		DOOR HEIGHT:	
SLACK ADJ:		TRUCK SPRINGS:	3-11/16" Travel D-5	UNDERFRAME:	
PISTON:		INNER:	Inner-Inner:	COUPLERS:	E60-BC
HANDBRAKE:	Ajax 1966	OUTER:	Snubber:	CPLR RELEASE:	
BELLCRANK:		Curvature-Uncoupled:		DRAFT GEAR:	
ANGLECOCK:		40' Base Car:		CUSHIONING:	
BRAKE SHOE:	1-1/2" H.F. Composition	Alike Car:		EOC Gas Units	
BRAKE BEAM:	Wabcopac	Drawings-Gen'l Arrg't:		YOKES:	
BK SHOE KEY:	AAR Lockey	Brake Arrg't:		FOLLOWER:	
MTY/LD:	None	Stencil Arrg't:		DRAFT KEY:	
ISSUED:	MAR/10/2004	U/F Arrg't:		CLASSBOOK:	
REVISED:					



BRAKE RATIO - EMPTY:	A-End Crossover Platform:
BRAKE RATIO - LOADED:	B-End Crossover Platform:
BRAKE RATIO - HANDBRAKE:	Brake Pipe Length:
STRUCTURALS	
BOLSTER	TOP COVER PLATE
	WEBS
	BOTTOM COVER PLATE
	SOLE PLATE
CROSSBEARERS	TOP COVER PLATE
	WEB
	BOTTOM COVER PLATE
CROSSTIES	
FLOOR STRINGERS	
FLOOR STRINGER:	
END SILL	
CENTER SILL	
DRAFT SILL	
REAR DRAFT LUGS:	
SIDE SILL	
SIDE SILL REIN.	
DOOR POST	
SIDE POST	
CORNER POST	
TOP CHORD	
END TOP PANEL	
END BOTTOM PANEL	
END LINING	
CENTER PLATES	
LADING ANCHORS - D.P.:	
LADING ANCHORS:	
PAINT	